

PART OF THE NE 1/4, OF SEC. 34, T.6N., R.1W., S.L.B. & M.

DENVER PLACE ADDITION

BLOCKS 5 & 6

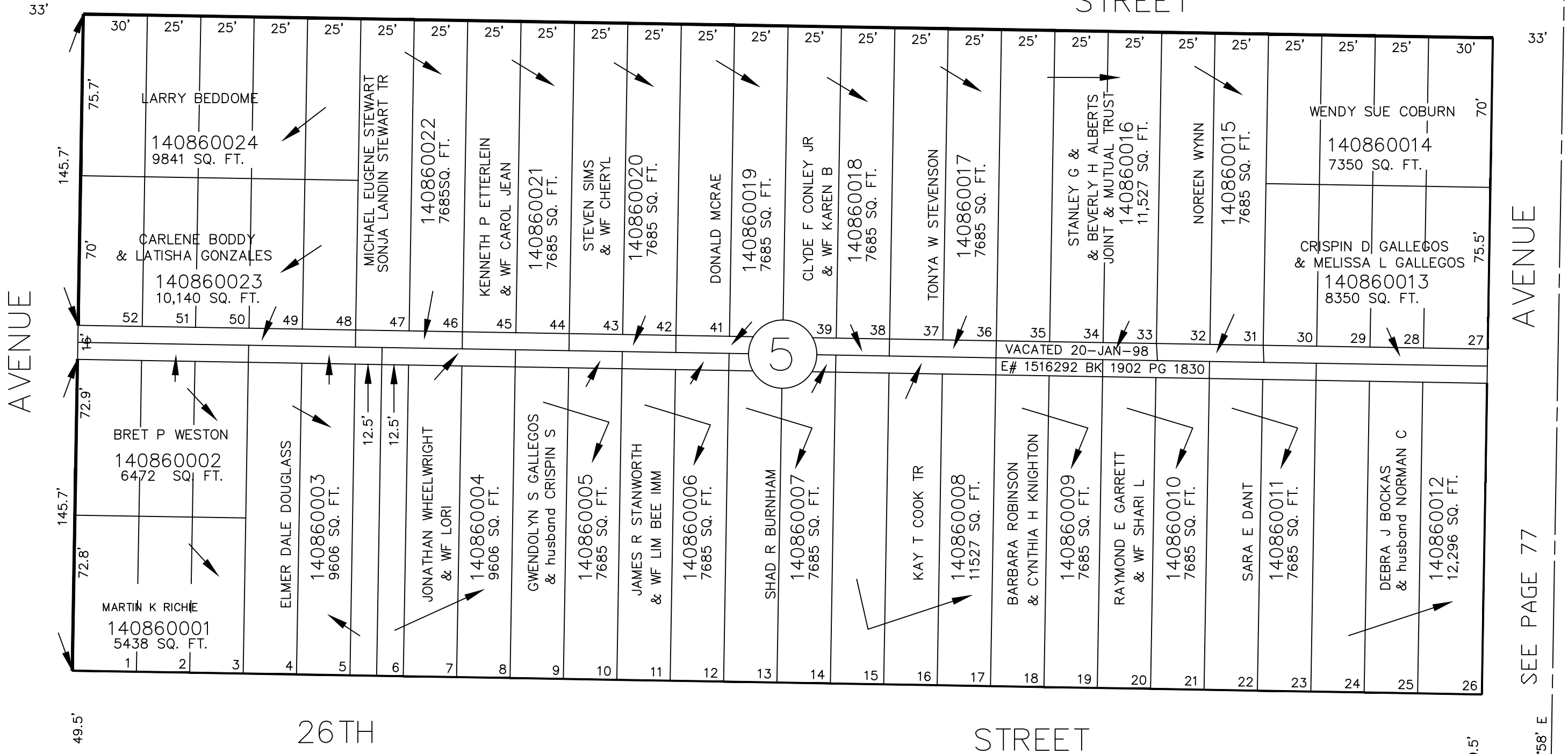
SEE BOOK 13, PAGE 126

IN OGDEN CITY,
SCALE 1" = 50'

TAXING UNIT: 25

LAKE

STREET



SEE PAGE 85

N 0'58" E

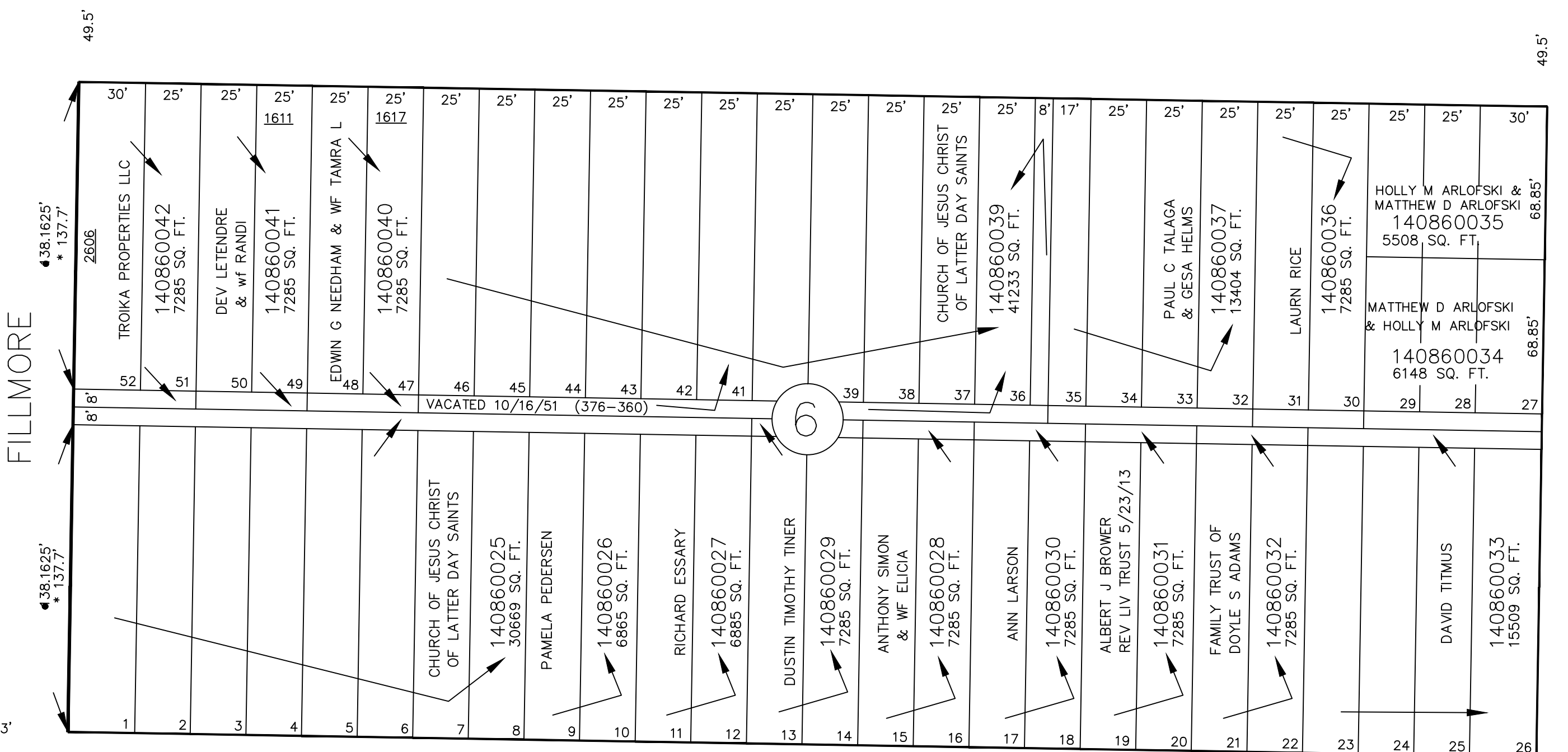
26TH

STREET

SEE PAGE 77

N 0'58" E

S 89'02" E



● OGDEN CITY ENG. DEPT. PLATS
* ORIG. DED. PLAT

BINFORD

FOR COMPLETE ENG DATA SEE
ORIGINAL DEDICATION PLAT IN
BOOK 2, PAGE 11 OF RECORDS.

STREET

SEE PAGE 87

S 89'02" E

JPS 1-94